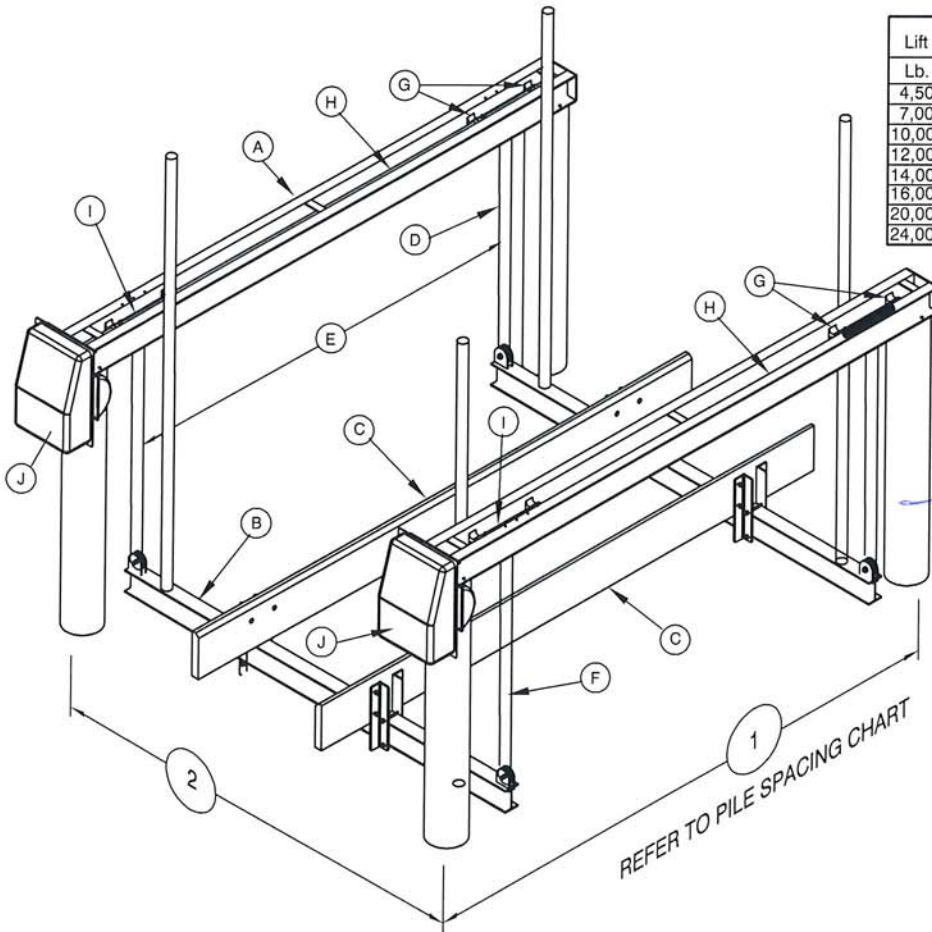


GOLDEN ENGINEERED 4 POST, 2 MOTOR BOAT LIFTS

PILE SPACING CHART
The boat center of gravity needs to be set in the center of the top beam

Lift Capacity		1" Dimension		2" Dimension		Recommended Pile Diameters			
Lb.	Kg.	Ft.	M	Ft.	M	In.	Mm		
4,500	2041	11	3.35	10	3.0	8	203		
7,000	3175	12	3.66	12	3.66				
10,000	4540			14	4.27	12.5	3.81		
12,000	5443					16	4.88	10	254
14,000	6350							9	229
16,000	7257			14	4.27	10	254		
20,000	9072	14	4.27	16	4.88	10	254		
24,000	10,886	16	4.88	16	4.88	10	254		



STRUCTURAL ENGINEERING REVIEW

THE GRAVITY AND WIND LOADS FOR THIS CONSTRUCTION HAVE BEEN CALCULATED AND MAIN WIND FORCE RESISTING SYSTEM AND COMPONENTS AND CLADDING OF THIS BUILDING DESIGN DO COMPLY WITH THE FLORIDA BUILDING CODE 2001, SECT. 1606 FOR WIND PRESSURES GENERATED BY A BASIC WIND SPEED OF 150 MPH.

Richard W. Arnold
Date 5/10/05

Richard W. Arnold
FL License No. 19334

Arnold/Sanders Consulting Engineers, Inc.
16881 McGregor Blvd. Suite 202, Fort Myers, FL 33908
Phone: 239-267-3666 Fax: 239-267-2771

SIGNATURE ONLY VALID WITH RAISED SEAL

STAINLESS STEEL PILING MOUNT BRACKET, 4 - 3/8" STAINLESS STEEL LAG SCREWS USED TO CONNECT THE BRACKETS TO THE PILING AND 2 - 3/8" CARRIAGE BOLTS USED TO CONNECT THE BRACKETS TO THE LIFT CHANNELS

PILING PENETRATION TO BE 10' INTO THE SAND BOTTOM OR 5' INTO THE ROCK STRATA, ALL PILING TO BE 2.5 C.C.A. TREATED

NOTE: This structure will withstand loads with speeds of 130 MPH calculated per F.B.C (01 ED) CH. 16 & ASCE document 7-98



NOTE: THIS STRUCTURE WILL WITHSTAND WIND LOADS ASSOCIATED WITH BASIC WIND SPEEDS OF 150 MPH CALCULATED PER F.B.C. 2001 AND ASCE 7-98

LIFT CAPACITY	TOP BEAM CHANNEL 2 EACH		CRADLE I-BEAM 2 EACH		BUNK BOARDS (PT)	CABLE SIZE		CABLE SPREAD		GUIDE POST HGTH	BRGS	DRIVE SHAFT	WINDER DIA	MOTOR HP VOLTAGE	INCHES OF LIFT PER MIN	RECOM PILING SIZES						
	Lbs	Kg	INCHES	MM		INCHES	MM	INCHES	MM								IN	MM				
4,500#	2043 kg	4 H x .15 2 W x .23 141" OAL	101.6h x 4.1mm 50.8w x 5.8mm 3.6m OAL	6 H x .19 4 W x .29 120" LGTH	152.4h x 4.8mm 101.6w x 7.4mm 3.05m OAL	2x6-144 ROUGH SAWN CARBETED 50.8 MM x 368.3 MM x 3.71M	4 - 5/16" x15' ST ST 1 PART	4 - 7.9mmØ x4.6m ST ST 1 PART	98"	2.6m	80" - 2M	EXTRUDED 6061-T6 ALUM. SCH 40 GALV PIPE	1-15/16" DIA. (23.8 MM) SCH 40 GALV PIPE	2-3/4 HP 120V/20A 240V/10A	27" 1M	8" DIA 203 MM						
7,000#	3178 kg	5 H x .15 2.25 W x .28 x 153" OAL	152.4h x 4.3mm 63.5w x 7.4mm x 3.9 m AOL	6 H x .19 4 W x .29 144" LGTH	203.2h x 5.8mm 127w x 8.9mm 3.7 m OAL		4 - 5/16" x30' ST ST 2 PART	4 - 7.94mmØ x9.2m ST ST 2 PART	110"	2.8m							120" - 3.1M	8 - 2" (50.8 MM) EXTRUDED 6061-T6 ALUM. 1-15/16" DIA. (23.8 MM) SCH 80 GALV PIPE	2-3/4 HP 120V/20A 240V/10A	2-1 HP 120V/20A 240V/10A	12-1/2" 392.9MM	10" DIA 254 MM
10,000#	4540 kg	6 H x .17 2.5 W x .29 x 153" OAL	177.8hx4.3mm 69.9wx7.4mm 3.9m OAL	8 H x .23 5 W x .35 150" LGTH	203.2hx 6.4mm 127w x 8.9mm 3.9 m OAL		4 - 5/16" x30' ST ST 2 PART	4 - 7.94mmØ x9.2m ST ST 2 PART	110"	2.8m												
12,000# & 14,000#	5448 kg & 6356 kg	7 H x .17 2.75 W x .29 x 153" OAL	203.2hx4.8mm 76.2wx8.9mm 3.9 m OAL	8 H x .25 5 W x .41 150" LGTH	203.4h x 6.4mm 127w x 10.4mm 3.8 m OAL	4 - 5/16" x45' ST ST 3 PART	4 - 7.94mmØ x13.7m ST ST 3 PART	122"	3.9m	120" - 3.1M	8 - 2" (50.8 MM) EXTRUDED 6061-T6 ALUM. 1-15/16" DIA. (23.8 MM) SCH 80 GALV PIPE	2-1 HP 120V/20A 240V/10A	9" 228.6MM	12" DIA 305 MM								
16,000#	7264 kg	8 H x .19 3 W x .35 x 153" OAL	203.2hx6.4mm 95.3wx10.4mm 3.9 m OAL	10 H x .25 6 W x .41 168" LGTH	254hx 6.4mm 152.4wx10.4mm 4.3 m OAL	4 - 5/16" x45' ST ST 3 PART	4 - 7.94mmØ x13.7m ST ST 3 PART	122"	3.9m						120" - 3.1M	8 - 2" (50.8 MM) EXTRUDED 6061-T6 ALUM. 1-15/16" DIA. (23.8 MM) SCH 80 GALV PIPE	2-1 HP 120V/20A 240V/10A	9" 228.6MM	12" DIA 305 MM			
20,000#	9080 kg	8 H x .25 3.75 W x .41 x 177" OAL	203.2hx6.4mm 95.3wx10.4mm 4.5 m OAL	10 H x .25 6 W x .41 192" LGTH	254hx6.4mm 152.4wx10.4mm 4.9 m OAL	4 - 5/16" x45' ST ST 3 PART	4 - 7.94mmØ x13.7m ST ST 3 PART	122"	3.9m											120" - 3.1M	8 - 2" (50.8 MM) EXTRUDED 6061-T6 ALUM. 1-15/16" DIA. (23.8 MM) SCH 80 GALV PIPE	2-1 HP 120V/20A 240V/10A
24,000#	10896 kg	8 H x .25 3.75 W x .41 x 201" OAL	203.2hx6.4mm 95.3wx10.4mm 5.1 m OAL	10 H x .29 6 W x .50 192" LGTH	254hx7.4mm 152.4wx12.7mm 4.9 m OAL	4 - 5/16" x45' ST ST 3 PART	4 - 7.94mmØ x13.7m ST ST 3 PART	134"	4.6m	120" - 3.1M	8 - 2" (50.8 MM) EXTRUDED 6061-T6 ALUM. 1-15/16" DIA. (23.8 MM) SCH 80 GALV PIPE	2-1 HP 120V/20A 240V/10A	9" 228.6MM	12" DIA 305 MM								
						3x10x189 ROUGH SAWN CARBETED 76 MM x 254 MM x 4.9 M																