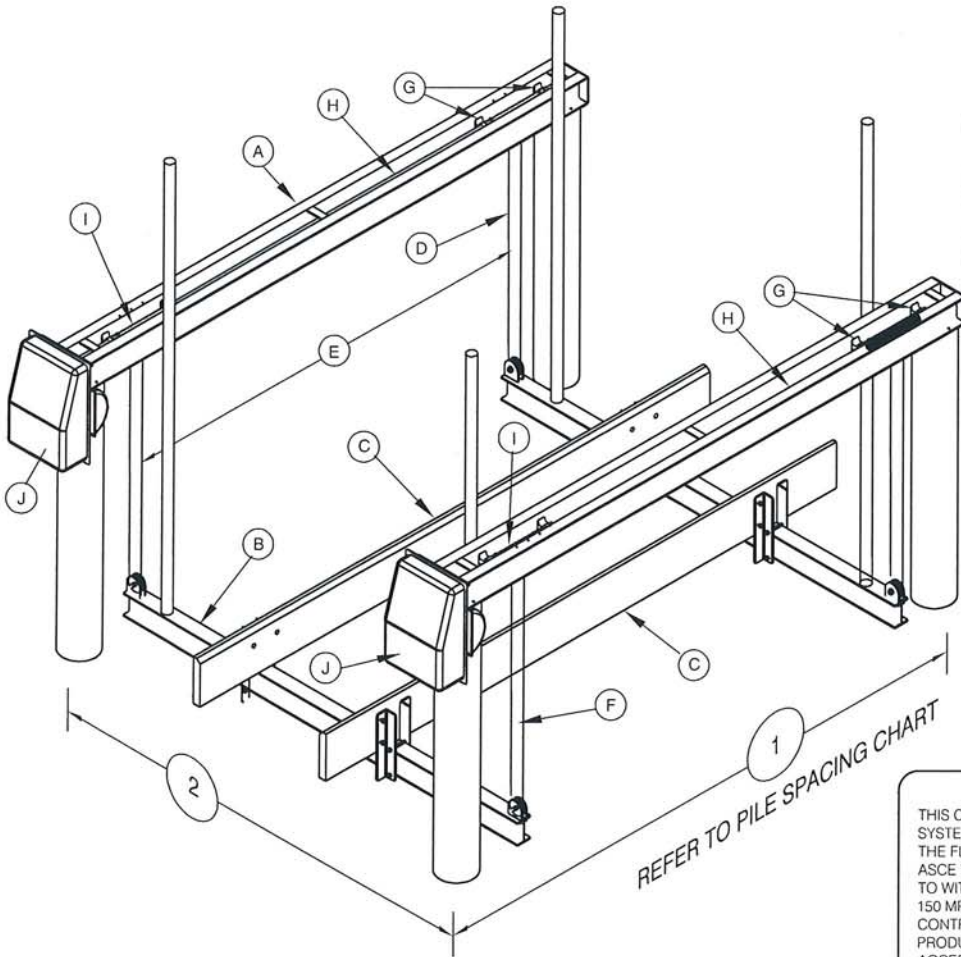


GOLDEN ENGINEERED "RUN ABOUT" 4 POST, 2 MOTOR BOAT LIFTS



PILE SPACING CHART
The boat center of gravity needs to be set in the center of the top beam

| Lift Capacity | "1" Dimension | "2" Dimension | Recommended Pile Diameters |
|---------------|---------------|---------------|----------------------------|
| 4,500 # | 8'-4" | 10'-0" | (4) 8"φ (min) |
| 5,500 # | | 12'-0" | |
| 9,000 # | 11'-9" | 12'-6" | |
| 12,000 # | | 12'-6" | |

STAINLESS STEEL PILING MOUNT BRACKET, 4 -
3/8" STAINLESS STEEL LAG SCREWS USED TO CONNECT THE BRACKETS TO THE PILING AND 2 - 3/8" CARRIAGE BOLTS USED TO CONNECT THE BRACKETS TO THE LIFT CHANNELS



NOTE: THIS STRUCTURE WILL WITHSTAND WIND LOADS ASSOCIATED WITH BASIC WIND SPEEDS OF 150MPH CALCULATED PER F.B.C. 2004 AND ASCE 7-02. BOATS SHALL NOT BE STORED ON LIFT DURING HIGH WIND EVENTS

IN GENERAL, PILING PENETRATION TO BE 10' INTO THE SAND BOTTOM OR 5' INTO THE ROCK STRATA. SUB-SURFACE CONDITIONS CAN VARY GREATLY, THE CONTRACTOR SHALL VERIFY ALL PILE CAPACITIES. ALL PILINGS TO BE 2.5 C.C.A. TREATED

STRUCTURAL ENGINEERING REVIEW

THIS CONSTRUCTION HAS BEEN DESIGNED AS A MAIN WIND FORCE RESISTING SYSTEM, WITH CALCULATED GRAVITY AND WIND LOADS IN COMPLIANCE WITH THE FLORIDA BUILDING CODE 2004, WITH 2006 REVISIONS, SECTION 1609 AND ASCE 7-02 MINIMUM DESIGN LOADS FOR BUILDINGS AND OTHER STRUCTURES TO WITHSTAND THE WIND LOADS ASSOCIATED WITH A BASIC WIND SPEED OF 150 MPH, EXPOSURE C. ARNOLD/SANDEFS CONSULTING ENGINEERS HAS NO CONTROL OF THE MANUFACTURING, PERFORMANCE, OR INSTALLATION OF THIS PRODUCT. THESE GENERIC PLANS WERE ENGINEERED IN ACCORDANCE WITH ACCEPTED ENGINEERING PRACTICES AND DATA PROVIDED BY THE MANUFACTURER.

Trevor Johnson 8-27-08
Trevor Johnson Date:
Reg. Florida No. 65624

Arnold/Sandef's Consulting Engineering, Inc.
Certificate of Authorization 9451
16681 McGregor Blvd, Suite 102, Ft. Myers, FL 33908
239-267-3666 Fax: 239-267-2771
SIGNATURE NOT VALID WITHOUT RAISED SEAL

| | (A) | (B) | (C) | (D) | (E) | (F) | (G) | (H) | (I) | (J) | | |
|---------------|--|---|---------------------------------|----------------------------------|-----------------|-----------------------|-----------------------------------|---|--------------------------------------|------------------------|------------------------------|--------------------------|
| LIFT CAPACITY | TOP BEAM CHANNEL 2 EACH | CRADLE I-BEAM 2 EACH | BUNK BOARDS (PT) | STAINLESS STEEL CABLE | CABLE SPREAD | GUIDE POST HGTH | BRGS | DRIVE SHAFT | WINDER | MOTOR HP VOLTAGE | INCHES OF LIFT PER MIN | RECOM PILING SIZES |
| 4,500 # | 4" H x 0.15 2" W x 0.23 108" O.A.L. | 6" H x 0.19 4" W x 0.29 120" O.A.L. | 2x8 x 12'-0" CARPETED ON CAP | (4) 1/4"φ x 15'-0" 1 PART | 78" | 80" | (8) 1.5" EXTENDED 6061-T ALUM. | 1-1/2" SCHEDULE 80 GALVANIZED STEEL PIPE | 2" SCHEDULE 80 6061-T6 ALUM. PIPE | 3/4 HP 1725 RPM | 48" | (4) 8"φ (min) |
| 5,500 # | | 6" H x 0.19 4" W x 0.29 144" O.A.L. | | (4) 1/4"φ x 25'-0" 2 PART | | | | | | | 24" | |
| 9,000 # | 5" H x 0.15 2.25" W x 0.26 150" O.A.L. | 6" H x 0.21 4" W x 0.35 144" O.A.L. | | (4) 5/16"φ x 25'-0" 2 PART | 13.5" | | | | | | | |
| 12,000 # | 6" H x 0.17 2.25" W x 0.29 150" O.A.L. | 8" H x 0.23 5" W x 0.35 150" O.A.L. | | (4) 5/16"φ x 25'-0" 2 PART | 13.5" | | | | | | | |

Golden Manufacturing, Inc. 17611 East Street, Fort Myers FL 33917